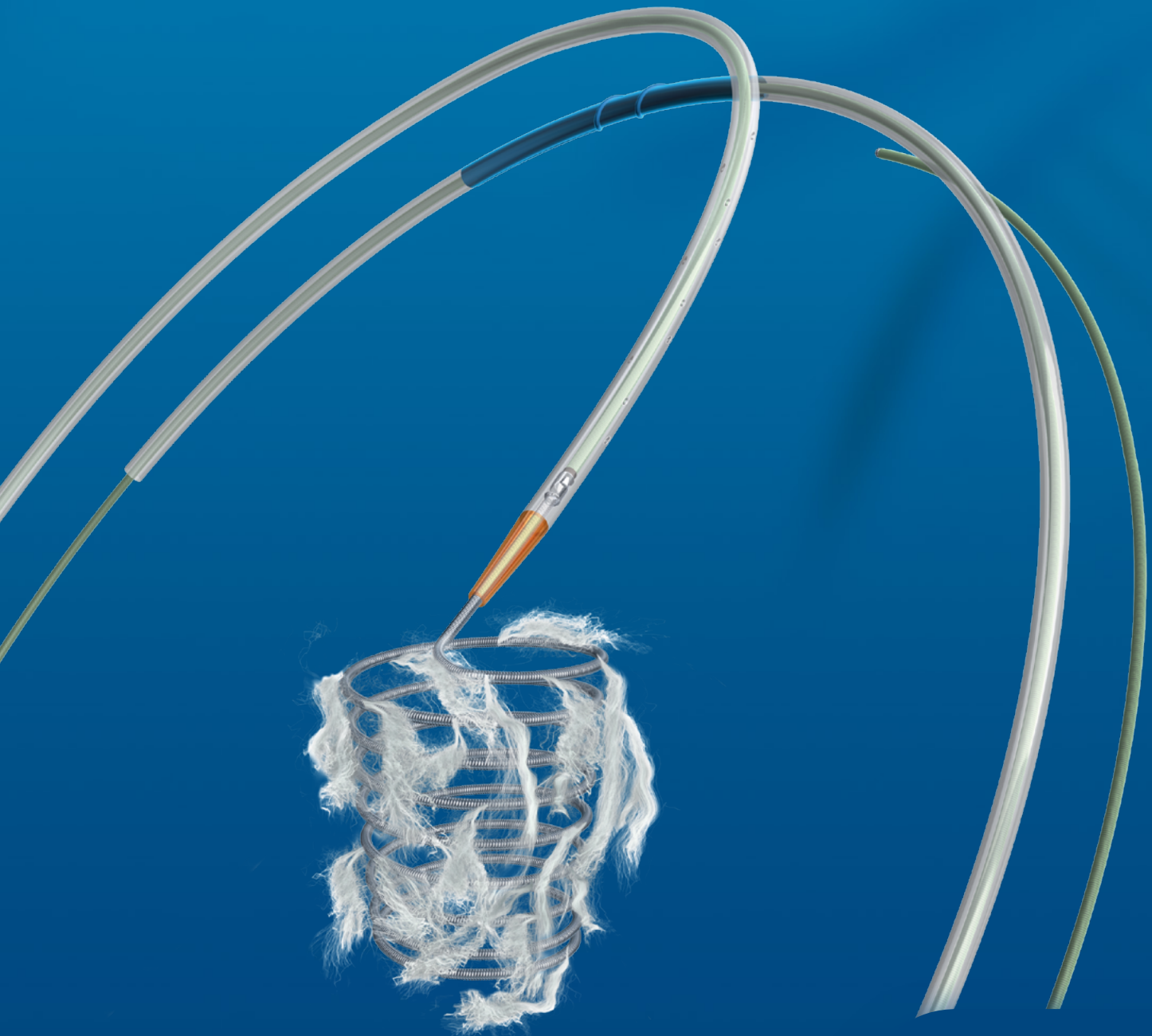


**INTERLOCK™ –35 COIL** Fibered IDC™ Occlusion System

**THE EVOLUTION BEGINS  
ONE ADVANCEMENT AFTER ANOTHER**



# Accuracy, Precision and Power

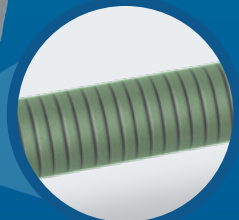
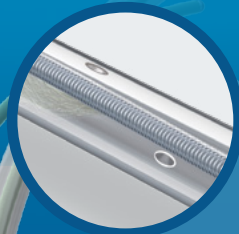
*The Interlock™-35 Coil introduced the unique combination of powerful Dacron™ Fibers and precise detachability. Now we redefine deliverability with advancements that are designed to improve the consistency of coil deployment. Technology advances again.*

## Improved Deliverability

Side holes on coil introducer allow for hydration during advancement and retraction

Nitinol pusher wire engineered for improved kink resistance

Flushing luer intended to facilitate pre-deployment hydration

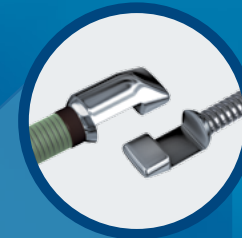


## Technology advances again.

### Precision

Interlocking arms for precise placement

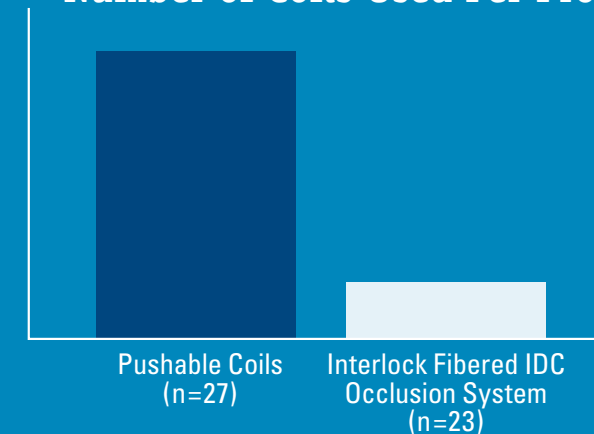
- The Interlock -35 Coil features a simple interlocking connection between the pusher wire and the coil.
- While inside the lumen of the catheter, the interlocking connection remains attached.
- When pushed outside of the catheter, the connection detaches.



### Power

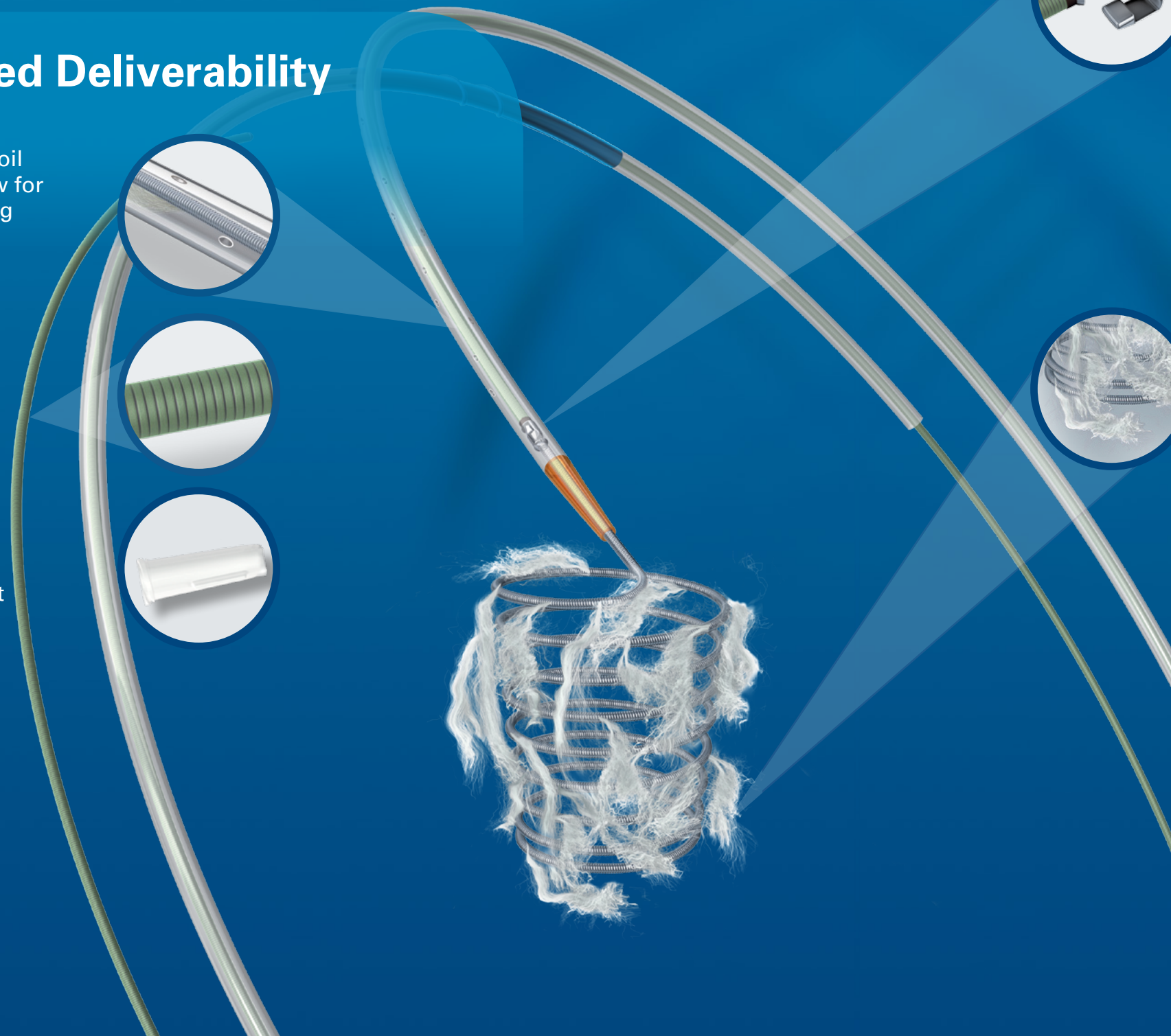
Dacron Fibers for rapid occlusion

#### Number of Coils Used Per Procedure



Dudek, et al, Embolization of the Gastroduodenal Artery Before Selective Internal Radiotherapy: A Prospectively Randomized Trial Comparing Standard Pushable Coils with Fibered Interlock Detachable Coils. CVIR, April 14, 2010.

- 83.6% of cases (19 of 23) achieved complete occlusion with one Interlock Fibered IDC Occlusion Coil.
- A shorter procedure time was observed for procedures utilizing detachable coils when compared to pushable coils.
- No coil migration was observed in the detachable coil group, whereas one incidence of migration was observed in the pushable coil group.



# INTERLOCK™ -35 COIL Fibered IDC™ Occlusion System



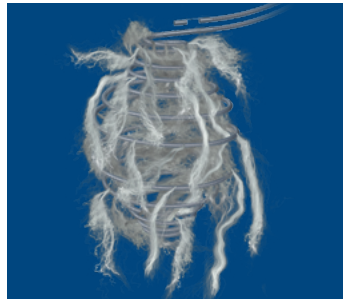
## Standard Length 2D Configurations

UPN	Description	Diameter (mm)	Length (cm)	Shape
M001363500	Interlock - 35 Coil	3	4	2D
M001363520	Interlock - 35 Coil	4	10	2D
M001363540	Interlock - 35 Coil	6	10	2D
M001363550	Interlock - 35 Coil	6	20	2D
M001363570	Interlock - 35 Coil	8	10	2D
M001363580	Interlock - 35 Coil	8	20	2D
M001363590	Interlock - 35 Coil	8	40	2D
M001363600	Interlock - 35 Coil	10	20	2D
M001363610	Interlock - 35 Coil	10	40	2D
M001363620	Interlock - 35 Coil	12	20	2D
M001363630	Interlock - 35 Coil	12	40	2D
M001363640	Interlock - 35 Coil	15	20	2D
M001363650	Interlock - 35 Coil	15	40	2D
M001363660	Interlock - 35 Coil	18	20	2D
M001363670	Interlock - 35 Coil	18	40	2D



## Cube Configurations

UPN	Description	Diameter (mm)	Length (cm)	Shape
M001363700	Interlock - 35 Coil	4	6	Cube
M001363720	Interlock - 35 Coil	6	10	Cube
M001363730	Interlock - 35 Coil	6	20	Cube
M001363760	Interlock - 35 Coil	8	20	Cube
M001363790	Interlock - 35 Coil	10	25	Cube
M001363800	Interlock - 35 Coil	10	40	Cube
M001363810	Interlock - 35 Coil	15	25	Cube
M001363820	Interlock - 35 Coil	15	40	Cube
M001363830	Interlock - 35 Coil	20	40	Cube



## Diamond Configurations

UPN	Description	Diameter (mm)	Length (cm)	Shape
M001363910	Interlock - 35 Coil	4	4.5	Diamond
M001363920	Interlock - 35 Coil	6	9	Diamond
M001363930	Interlock - 35 Coil	8	14	Diamond

**Boston Scientific**  
Advancing science for life™

### FIBERED IDC

**CAUTION:** Federal law (USA) restricts this device to sale by or on the order of a physician. Rx only. Prior to use, please see the complete "Directions for Use" for more information on Indications, Contraindications, Warnings, Precautions, Adverse Events, and Operator's Instructions.

**INTENDED USE/INDICATIONS FOR USE:** The Interlock - 35 Fibered IDC Occlusion System is indicated for obstructing or reducing blood flow in the peripheral vasculature during embolization procedures. This device is not intended for neurovascular use. **CONTRAINDICATIONS:** None known. **PRECAUTIONS:** Do not attempt to use the Interlock - 35 Fibered IDC Occlusion System with a soft-walled delivery catheter. Do not advance the Interlock - 35 Fibered IDC Occlusion System if it becomes lodged within the catheter. Determine the cause of the resistance and replace the catheter and coil if necessary. **ADVERSE EVENTS:** The complications that may result from a peripheral embolization procedure include, but are not limited to: • Complications related to catheterization (e.g., hematoma at the site of entry, clot formation at the tip of the catheter and subsequent dislodgement, nerve and vessel dissection or perforation, etc.) • Pain • Hemorrhage • Infection necessitating medical intervention • Foreign body reactions necessitating medical intervention • Emboli • Ischemia • Vasospasm • Tissue necrosis • Undesirable clot formation of the vasculature • Recanalization • Death • Temporary neurological deficit

Interlock and Fibered IDC are unregistered trademarks of Boston Scientific Corporation or its affiliates.  
All other trademarks are property of their respective owners.

**Peripheral Interventions**  
300 Boston Scientific Way  
Marlborough, MA 01752-1234  
[www.bostonscientific.com](http://www.bostonscientific.com)

To order product or for more information  
contact customer service at 1.888.272.1001.

© 2015 Boston Scientific Corporation  
or its affiliates. All rights reserved.

PI-181206-AC JUN2015